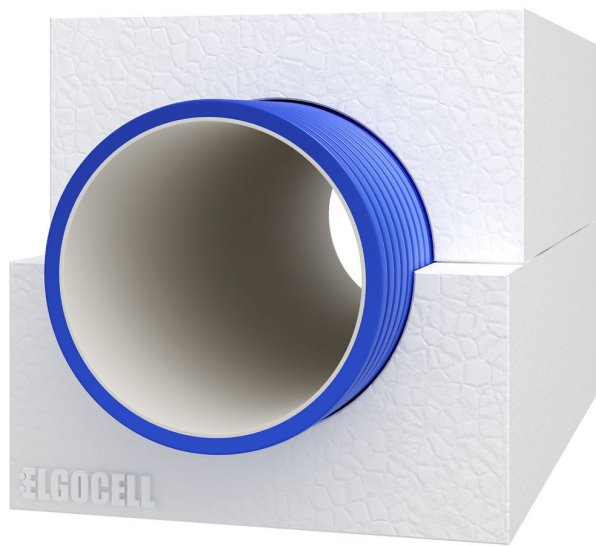


PLEASE NOTE THAT THIS IS AN ABRACKT OF THE SWEDISH  
TECHNICAL MANUAL.

FOR ANY INQUIRIES PLEASE CONTACT ELGOCELL.

## INSTALLATION INSTRUCTIONS EPS PIPE™



LOWER CARBON FOOTPRINT 

### INSTALLATION OF INSULATION WITH INSET

#### EXPANDED POLYSTYRENE (EPS)

Please ensure that proper access is available for delivery as ELGOCELL will use articulated lorries. Further note that the quote excludes off loading of goods.

The EPS is delivered on pallets and proper mechanical assistance is required for off-loading.

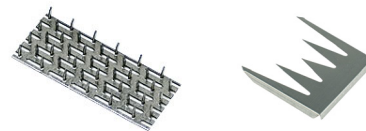
Due to the light weight of the EPS material, please make sure that during storage the EPS should be properly tied and anchored.



The delivery of mounting accessories such as steel fixing joints and toothed-plate connectors will be sent separately.

Make sure that the material delivered corresponds to the material specification quoted.

The delivery also includes, where applicable, prefabricated bends, either vertical and/or horizontal.



#### INSTALLATION

Place the bottom parts [1] according to site drawing delivered from specifier. Place the top part alongside the trench.

Use one fixing joint on each side to fix the bottom part together [2.1]. Alternatively the joint can be mounted from above the side of the insulation [2.2].





### INSTALLATION OF INSULATION WITH INSET



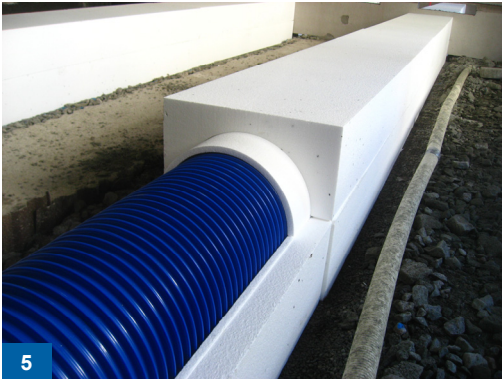
3

Measure where to place the sleeve and cut the inset



4

Inset is place on top of the ducts



5

The top part is place on inset



6

The top part is fixed with toothed-plate connectors



7.1

Adjustment with saw



7.2

Adjustment with hot wire



A

Insulation cut for tees



B

Pre-manufactured bends